



BEYOND IN-ROOM

SECURITY

CONTENTS

THE COMPANY VINGCARD ELSAFE	3
WHY IN-ROOM SAFES?	4
Peace of mind when your guests are away from home	
Why Elsafe In-room Safes?	
Security - UL Listed	
Reliable electronics and ready for future software upgrades	
Additional Exclusive Security	
Benefits of a fully-featured Audit Trail	
Ease of maintenance	
Service	
ELECTRONIC IN-ROOM SAFES	6
Infinity II Digital by Elsafe	
Infinity II RFID by Elsafe	
SENTINEL II Digital by Elsafe and SENTINEL II RFID by Elsafe	
RADIO FREQUENCY IDENTIFICATION TECHNOLOGY	10
OPTIONAL RF ONLINE UPGRADEABILITY	11
ELECTRONIC IN-ROOM SAFES CONTINUOUS	12
ZENITH by Elsafe	
SERVICE UNITS	16
SafeLink	
PinKey PLUS	
PLACEMENT SOLUTIONS	18
On-Wall	
Floor	
Shelf	
Drawer	
Closet	
ADDITIONAL INFORMATION	19
Colors	
Dimensions	

STAY SMART

THE COMPANY VINGCARD ELSAFE

Since revolutionizing the hospitality industry in 1979 with hotel security solutions, VingCard Elsafe has continued to lead the market by continuously introducing innovations to the industry. VingCard Elsafe is dedicated to providing electronic security solutions to the hospitality industry and other facilities where people sleep away from home, and is recognized as the established worldwide leader within the industry.

We are where you are. With our sales force covering all corners of the world, we have secured thousands of properties and millions of rooms. VingCard Elsafe is your true global security partner, dedicated to offering advanced security solutions and peace of mind for both hospitality providers and their guests.



WHY IN-ROOM SAFES?

Our experience is your security

Peace of mind when your guests are away from home

Electronic in-room safes contribute to raising the security level in your hotel, increasing your guests' peace of mind.

Why Elsafe In-room Safes?

Not all in-room safes are equal! Only Elsafe offers a true in-room security solution with a sophisticated blend of advanced security features, technology, convenience and style.

Security - UL Listed

We took our in-room safes to the world's most recognized and respected product testing organization. After enduring rigorous testing procedures by Underwriters Laboratories, Infinity by Elsafe became the first UL-listed in-room safe in the 1037 category for anti-theft devices. This prestigious UL listing is now awarded to both the Infinity and Sentinel models, including physical break-in tests, endurance tests and jarring tests.

■ How does UL-listing benefit you?

The exclusive UL-1037 listing achieved by Elsafe's in-room safes gives you added assurance that your guests' valuables are receiving the maximum level of protection possible. Not only does this protect your guests' property, it also protects your property's valuable reputation. With Elsafe, your guests can rest easy... and so can you!

Reliable electronics and ready for future software upgrades

- Elsafe in-rooms safes have Flash memory.
- Elsafe in-room safes are ready for future software upgrades.

FLASH
RAM

FLASH memory = no codes or information is lost from the safe, even if the batteries are empty or if you lose power during battery replacement.



SENTINEL II and Infinity II safes have the power outlet mounted in the door for easy access. For the Zenith safes, the power outlet is mounted on the back wall (Options are EURO, US and UK).

Additional Exclusive Security

ELSAFE'S REVOLUTIONARY LOCKING SYSTEM THE AT BEST RESISTING FORCIBLE ENTRY

Specially-designed latch teeth engage both the door and frame if there is any attempt to force the door open.

ANTI-TAMPER LABYRINTHS PROTECT SAFE ELECTRONICS FROM MANIPULATION

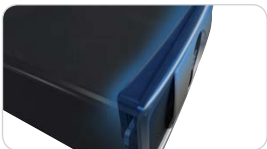
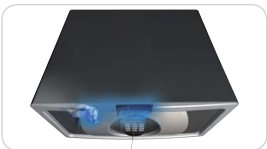
Ingenious design prevents unauthorized users from reaching electronics and the safe's mechanism with even the slenderest of probes.

ONE PIECE COLD-PRESSED DOOR IS OVER 70 % STRONGER THAN SHEET STEEL

Infinity II and SENTINEL II curved door profile and integral dished front are coldpressed in our own factory, making it by far the strongest and most secure door in its class!

EXTENDED SOLID STEEL BOLT HINGES ARE SECURE AND ULTRA RELIABLE

The over-sized solid steel hinges are arc-welded permanently to the door, so they are virtually impossible to force out from the door frame.



Benefits of a fully-featured Audit Trail

Knowing the exact time that a safe was opened and the identity of the user is a valuable tool in the event that a guest reports something stolen.

Elsafe provides the industry's most complete and detailed audit trail reporting solution, identifying all safe operations executed. Reports can be printed out in the guestroom with the guest present to prevent claims of tampering.

Ease of maintenance

■ Easy battery change

Elsafe helps improve day-to-day operations at the property. Battery changes can be securely done from the outside, even when the safe is in use by a guest and locked, saving time and resources for the hotel.



Service

Service has always been an important part of our offering. Wherever you are located and whatever kind of product you use, we can provide support and guidance.

VingCard Elsafe's sales and support organization spans the globe. This allows our valued customers to enjoy the benefits of our worldwide resources, along with the convenience of local service and support.

Committed to a partnership with our customers in the hospitality industry, VingCard Elsafe believes that every customer is a customer for life. Our installation and training programs demonstrate this commitment. Technical support is always close at hand to answer any questions you may have, so you can get the support you want, when you need it. 24 hour 365 day support may be chargeable in some countries or may be provided during reduced hours.

VingCard Elsafe offers the world's largest support, service and sales organization for your convenience.

So stay with the leader, Stay Smart – VingCard Elsafe.



ELECTRONIC IN-ROOM SAFES

Elsafe offers a complete range of in-room safes to suit your needs

Infinity II Digital by Elsafe

Stay Safe | The unmatched in-room safe.

Infinity II series, a new era in hotel in-room safes. Infinity II is ideal for the most demanding hotels, lifestyle brands and boutique properties that thrive to be different. By combining sophisticated technology and fashionable design, Infinity II is the ultimate safe for the design-conscious hotelier.

With the sleek, stylized design and high tech neon blue backlit keypad, combined with Elsafe's industry leading high quality safe platform, Infinity II digital brings richness to the hotel room like no other safe before.



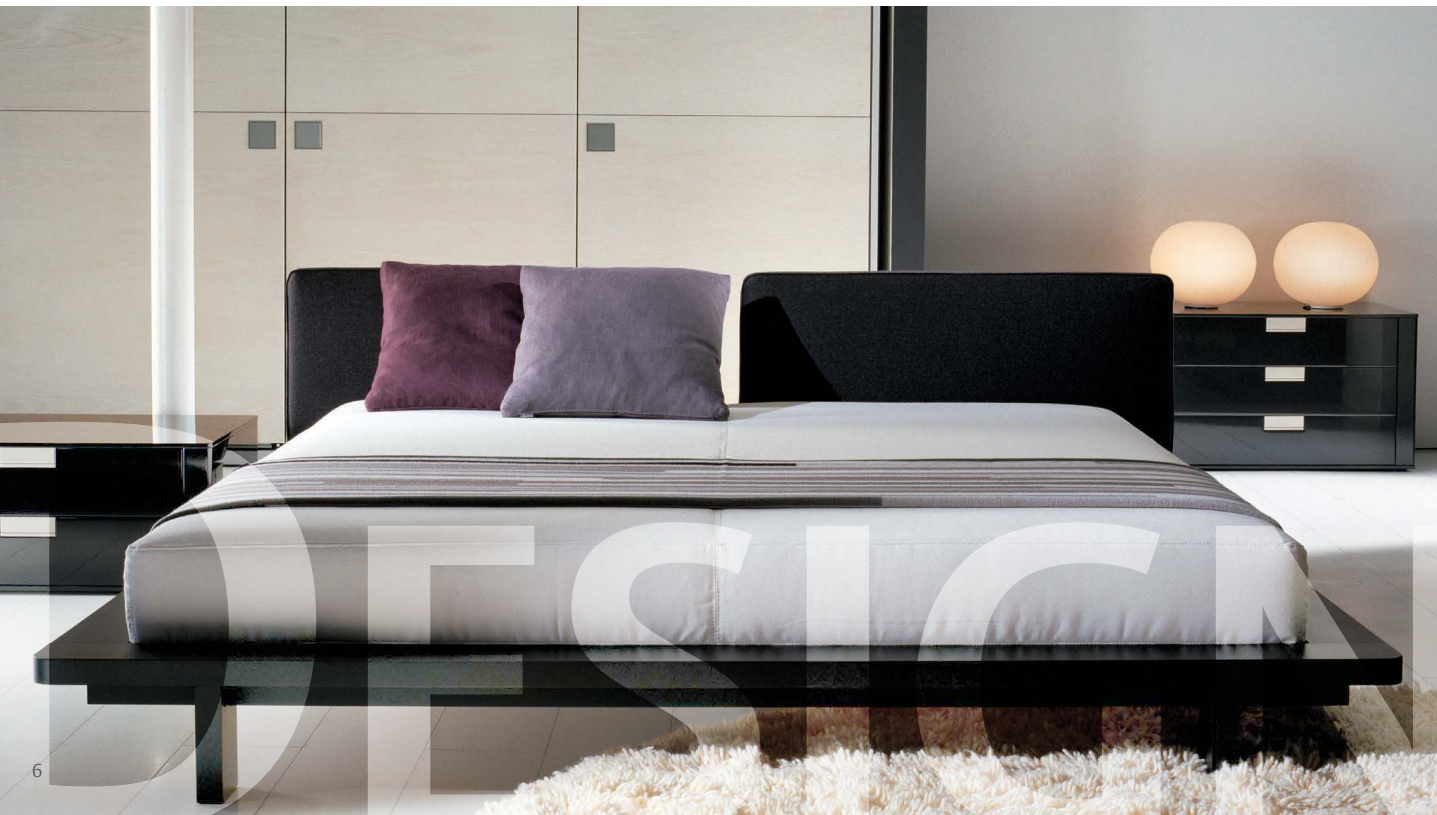
■ Infinity II Digital features:

- ADA compliant telephone-style keypad.
- 4 or 6 digit guest code and high tech neon blue backlit digit display and keypad.
- Spring loaded door.
- RFID upgradeable.

■ Standard features:

- UL-1037 certified for physical security.
- Industry-leading audit trail.
- Confirmation buzzer.
- Convenient inside light.
- Anti tamper switch
- Easy outside battery change.
- True laptop friendly safe.
- Unique modular construction for easy upgradeability.

For other features, please see the comparison chart on page 14-15 and page 19 for dimensions.





Infinity II RFID by Elsafe

Stay Safe | The unmatched in-room safe.



Following the same concept as our digital models, Infinity II RFID provides the same sophisticated touch to the hotel room, but in RFID mode. Our safe technology works in tandem with the leading Signature RFID contactless electronic lock from VingCard. Thanks to VingCard's exclusive anti-cloning technology, Infinity II RFID can only be opened with the designated RFID guest key or its "NFC"/"BLE"-compatible cell phone.



■ Infinity II RFID features:

- Compatible with Signature RFID by VingCard electronic lock, thus operating the same RFID guest room key.
- 13,56MHz technology.
- Compatible with the following standards:
 - : ISO 14.443 A (MIFARE)
 - : ISO 14.443 B
 - : ISO 15.693
- Compatible with NFC/BLE standards.

■ Standard features:

- UL-1037 certified for physical security.
- Industry-leading audit trail.
- Confirmation buzzer.
- Convenient inside light.
- Anti tamper switch
- Easy outside battery change.
- True laptop friendly safe.
- Unique modular construction for easy upgradeability.

For other features, please see the comparison chart on page 14-15 and page 19 for dimensions.

Infinity II
by Elsafe®

SENTINEL II Digital by Elsafe and SENTINEL II RFID by Elsafe

Stay Safe | Not all safes are created EQUAL.

Elsafe goes beyond the ordinary with its New SENTINEL II hotel in-room safe series. We have taken in-room security to a new level and combined it with a functional and trendy design. SENTINEL II electronic in-room safe is more than just an in-room safe... It has become an important style element that blends into any environment! This new safe series operates on either digital keypad, RFID, and/or RF-Online platform.

SENTINEL II Digital by Elsafe hotel in-room safe gives you the highest standard in hotel in-room security with the UL-1037 certification. Our hotel safes set the pace with the most unique features offered in electronic safes for hotels.



■ **SENTINEL II Digital features:**

- ADA compliant telephone keypad.
- 4-Digit guest code.
- Push button to lock door.
- RFID upgradable.

■ **Standard features:**

- UL-1037 Certified for physical security.
- Industry-leading audit trail.
- Easy outside battery change.
- Spring loaded door.
- True laptop friendly safe.
- Unique modular construction for easy upgradeability.

For SENTINEL II RFID features, please see the page 7. For other features, please see the comparison chart on page 14-15 and page 19 for dimensions.

SENTINEL II
by Elsafe®





RADIO FREQUENCY IDENTIFICATION TECHNOLOGY

Both SENTINEL II RFID and Infinity II RFID by Elsafe share the same technology as the RFID locks from VingCard.

A wide range of RFID (contact less) carriers

Elsafe offers a wide range of RFID carriers that are especially designed for different applications (for your guests or for your VIP guests) and gives you the opportunity to enhance your guests' experience at your hotel.

■ Typical Hotel application:

Guests: Low cost guest keycards.
VIP guests: Keyfobs and cell phones

■ Typical Resort & spa application:

Guests: Wristbands.
VIP guests: Wristbands, keyfobs or cell phones.



Long lasting staff and guest keycards



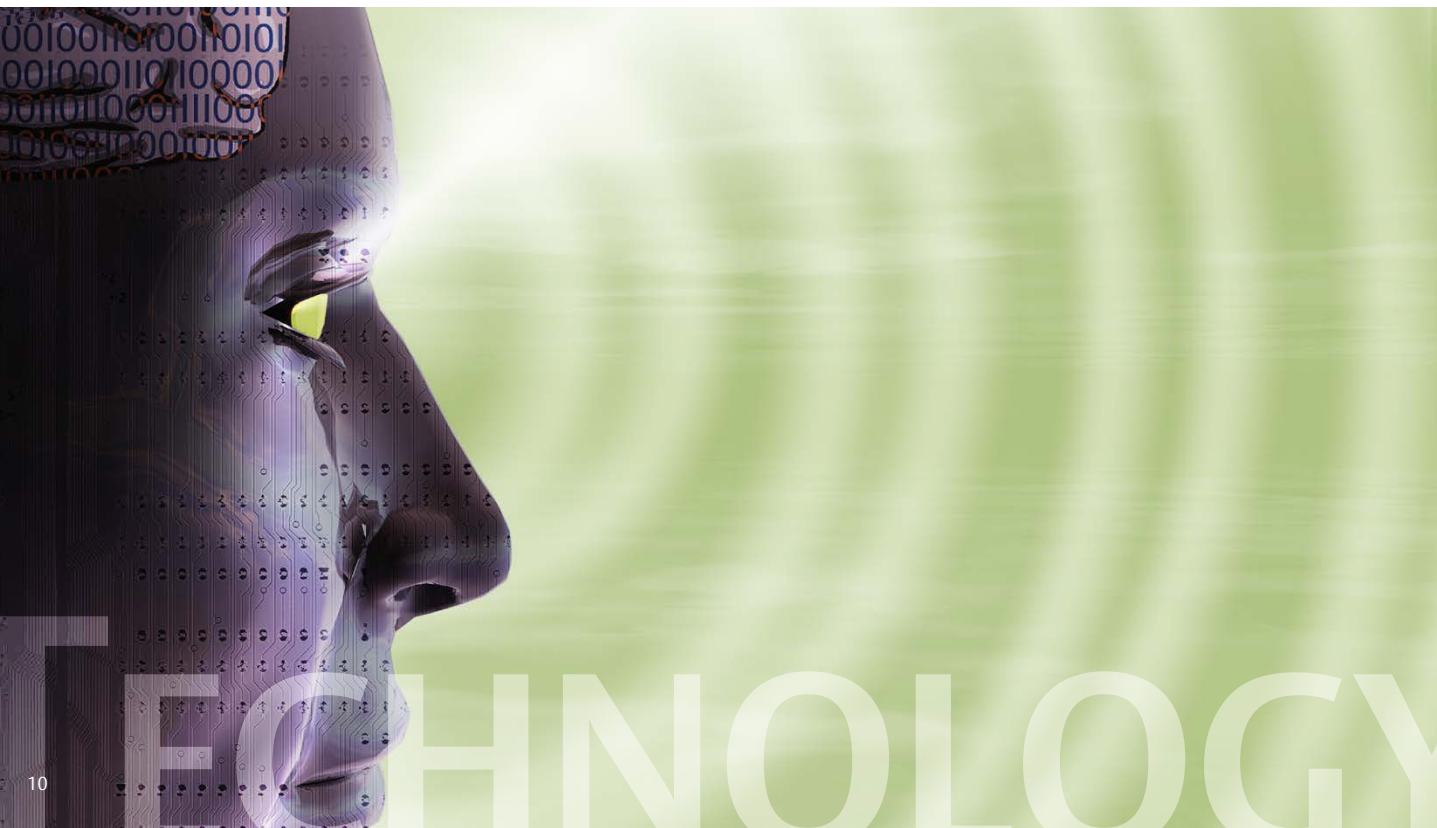
Keyfobs



Wristbands



Cell phone





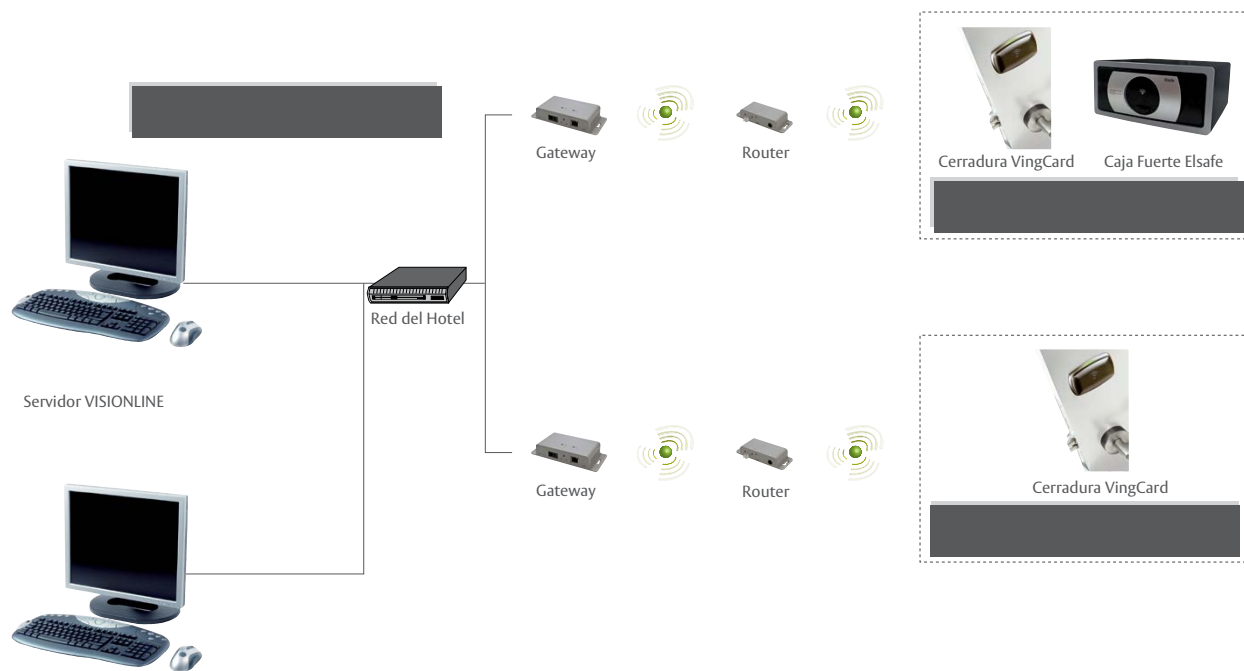
OPTIONAL RF ONLINE UPGRADEABILITY

With SENTINEL II and Infinity II you have the opportunity to upgrade to online mode and get wireless online communication with reception transmitted through the high security Zigbee network.

- More Security and Control.
- More Services to Your Guests.
- More Efficient and Cost Effective Hotel Operations.
- More Efficient Front Desk Operations.
- More Efficient Engineering and Maintenance.
- ... And Less Hassle...

RF-online network architecture

- Standalone electronic locks and in-room safes with RF-end nodes communicating to the VISIONLINE server through the Zigbee network.
- Gateways connecting to hotel Ethernet network for direct communication with the VISIONLINE server. Routers that relay communication between locks and gateways.



Note: RF-online upgrade requires VISIONLINE by VingCard Zigbee RF-online network to be installed



ZENITH by Elsafe

Stay Safe

The choice of in-room electronic safes becomes easy when you can choose Zenith by Elsafe to secure your guests' belongings.

Zenith is advanced and economical security, with the industry's leading audit trail system that allows you to print out comprehensive reports on all safe activities.

■ Zenith features:

- Modern slim design
- Industry-leading audit trail
- Audit trail with in-room print-out option
- Flash-RAM memory
- ADA compliant telephone-style keypad
- 4-digit guest code
- LED display for clear visible numbers
- Backlit display
- Inside Light
- Push button to close door
- Powered with 5 LR6/AA batteries
- Easy external battery change
- Hydraulic door opener
- Laptop compatible up to 17"
- Serviced by SafeLink or PinKey PLUS
- Anti-tamper labyrinth
- Optional RF-online upgrade
- 18mm solid steel bolt locking mechanism
- Inside carpet
- Security wire to prevent the safe from being removed
- Triangular support to locking bolt for mechanism enforcement

ZENITH
by Elsafe®

Zenith is available in many sizes and models to complement your hotel room regardless of style and need.



Zenith In-Wall Safe is the ideal solution for hotels that need to maximize limited guestroom space. Zenith In-Wall Safe fits perfectly on any cupboard, armoire or closet wall as well as on the guestroom wall.



Zenith Drawer is the ideal solution for hoteliers who want to maximize convenience for their guests and encourage use of the in-room safe. It provides superior design flexibility, allowing for placement inside drawers, cupboards...or anywhere in the room that it is most accessible and easy for guests to use.



Zenith Floor is a large size safe mounted to the floor that provide ample storage space for exclusive suites and back office.



The standard Zenith (ZD27/ZD43/ZDWI) that accommodate up to 17" laptop and meet any guestroom space limitation and location requirement.

ZENITH
by Elsafe®

COMPARISON CHART - Features	Infinity II Series	SENTINEL II Series	ZENITH Series
UL-Listed	Yes	Yes	No
Upgradeable	Yes	Yes	Yes
Reprogrammable configuration	Yes	Yes	Yes
Support IR communication	Yes	Yes	Yes
Power supply	5 LR6/AA cells	5 LR6/AA cells	5 LR6/AA cell
Power options	Mains 110V - 240V power operation and 5 LR6/AA cell backup batteries or 5 AA batteries.	5 AA batteries	5 AA batteries
Outside battery change	Yes	Yes	Yes
Low battery warning	Yes	Yes	Yes
Audit trail	Yes	Yes	Yes
Audit trail print-out	Yes	Yes	Yes
Memory	Flash-Memory	Flash-Memory	Flash-Memory
Locking method	RFID: Shut & Lock with the unique guest RFID room key Digital: Shut & Lock push button	RFID: Shut & Lock with the unique guest RFID room key Digital: Shut & Lock push button	Push button
Locking mechanism	Interlocking deadbolt mechanism	Interlocking deadbolt mechanism	18 mm solid steel bolt
Keyboard	RFID: No Digital: ADA compliant telephone keypad	RFID: No Digital: ADA compliant telephone keypad	Digital: ADA compliant telephone keypad
User operation	RFID: Guests' unique RFID room key Digital: 4-digit or 6-digit code	RFID: Guests' unique RFID room key Digital: 4 digit code	Digital: 4 digit code
LED display	Yes (Digital)	Yes (Digital)	Yes (Digital)
Backlit keypad	Yes (blue LED)	Yes (green LED)	Yes (green LED)
Confirmation buzzer	Yes	No	No
Service unit	PinKey PLUS & SafeLink	PinKey PLUS & SafeLink	PinKey PLUS & SafeLink
Door construction	One-piece cold pressed	One-piece cold pressed	
Anti-tamper labyrinth	Yes	Yes	Yes
Anti-tamper switch	Yes	Optional	Optional
Spring loaded door	Yes	Yes	Yes
Laptop compatible	Yes, up to 17" in Infinity 49	Yes, up to 17" in SENTINEL 49	Yes, up to 17" in ZD17/ZD WI / ZD FL
Internal power outlet	Yes	Yes	Yes
Inside light	Yes	Optional	Yes
Inside carpet	Yes	Yes	Yes
Color option	3 choices. See page 19 for options	No	2 choices - See page 19 for options
Rental system option	Yes	Yes	Yes
Remote audit trail	Yes (Online)	Yes (Online)	Yes (Online)
Remote safe locked notification	Yes (Online)	Yes (Online)	Yes (Online)
Mechanically opened alert	Yes (Online)	Yes (Online)	Yes (Online)
Clear safe memory warning	Yes (Online)	Yes (Online)	Yes (Online)
Automatic synchronization of date and time	Yes (Online)	Yes (Online)	Yes (Online)

1 Lock by holding to the sensor
2 Open by holding to the sensor



SERVICE UNITS

Easy management

The simplest and most secured system for managing your in-room safes - in the palm of your hand!

SafeLink

Elsafe's SafeLink handheld system brings simplicity and security to hotel safe management.

■ Total control in the palm of your hand

SafeLink requires unique user ID's for all users to access SafeLink software. This, enables you to securely override locked safes, program safes, print and read event log superior to masterkey or mastercode overrides.

■ Set up all your hotel's safes in minutes

Using your SafeLink unit and a simple connector cord or infrared communication, you can set up safes, securely override accidentally locked safes, and download safe audit trail information with just a few clicks.

■ Intuitive and easy to use

Touch screen Windows® PocketPC software. All commands and options are simple to select with the user-friendly, intuitive buttons on the handheld unit's high visibility touch screen.

■ Highly protected access

4 different user levels and up to a 1,000-staff capacity. Every member of your staff receives a personal alphanumeric code during set-up to identify them within the system.

■ Fully-featured staff audit trail

Our audit trail is unique and you should not accept less.

Your SafeLink will maintain a complete record of up to 1,000-staff operations, providing the industry's most detailed report.

Reports include emergency openings for all safes, which staff member has used the SafeLink, what operations have been performed, and at what time.

Reports can be viewed on screen/display, printed or saved to file at any time.



Statistics and hotel information is always shown in the audit trail.

All events are listed with exact time and date.

Change of time and date is logged.

All incorrect guest codes are listed. This might unveil unfaithful staff members trying to guess codes.

The guest has entered the code but forgotten to press the lock button.

The Elsafe audit trail can be printed in the room while the guest is present. There is even a field for signature at the bottom.

Hotel name: World Hotel
Hotel ID: 00008246
Room No.: 0123
Safe Model: Infinity
Serial No.: 4.800.002
Last Service Open: 23.08.03 01:50 Bob Leash
Last tamper: Never
Operation hours: 45
No. of Lockings: 7
No. of Serv. Openings: 2
Readout time: 24.08.03 15:17

24.08.03 15:17 Locked
24.08.03 15:17 Unlocked
24.08.03 15:17 Locked
24.08.03 15:17 Door Time-out
24.08.03 15:17 Time-out
24.08.03 15:17 Logoff
24.08.03 15:16 New Date/Time
23.08.03 01:50 Old Date/Time
23.08.03 01:50 Service Opened
23.08.03 01:50 Logon
ID: Bob Leash
23.08.03 01:49 Incorrect Guest Code
Code: 7446
23.08.03 01:49 Incorrect Guest Code
Code: 6756
23.08.03 01:49 Incorrect Guest Code
Code: 7656
22.08.03 16:31 Locked
22.08.03 16:30 Unlocked
22.08.03 12:20 Locked
22.08.03 12:19 Unlocked
22.08.03 08:31 Locked
22.08.03 08:27 Logoff
22.08.03 08:27 Service Opened
22.08.03 08:27 Logon
ID: Johnny Olden
22.08.03 08:26 Five Incorrect Codes
22.08.03 08:26 Incorrect Guest Code
Code: 4444
22.08.03 08:26 Incorrect Guest Code
Code: 3333
22.08.03 08:26 Incorrect Guest Code
Code: 2222
22.08.03 08:25 Incorrect Guest Code
Code: 1111
22.08.03 08:25 Incorrect Guest Code
Code: 0000
21.08.03 16:16 Locked
21.08.03 16:15 Unlocked
21.08.03 08:35 Locked
21.08.03 08:34 Time-out
21.08.03 08:33 Logoff
21.08.03 08:33 Service Opened
21.08.03 08:33 Logon
ID: Johnny Olden
21.08.03 08:30 Tamper Activated

Hotel Signature: _____
Guest Signature: _____

The last service opening can never be deleted from the audit-trail.

User did not close safe door properly when trying to lock it. Safe could therefore not lock and returned to open position.

Identification of the person using the SafeLink, with full name.

After five different incorrect guest codes the safe goes into a countdown. Then it can either be opened with the SafeLink during the countdown or opened with user code after thirty minutes.

If the back-cover has been removed and the safe prepared for future crime, this is logged*.

* If anti tamper function is applicable



■ SafeLink features:

- A complete security management solution.
- Compatible with Infinity II, SENTINEL II and Elsafe's Classic and most earlier safes.
- Fast and intuitive Windows® PocketPC based software.
- Pocket PC is compatible with both safes and locks.
- Simple, high level password protection.
- Detailed 'safe event' audit trail from all compatible safes.
- 1,000-'SafeLink event' audit trail.
- Memory card for instant backup and restore.
- Audit trail displays on screen, or prints direct from infrared printer.
- Wireless Infrared or optional cable connection between SafeLink and safe.
- Proven reliability and support from the world's leading in-room safe manufacturer.



PinKey PLUS

The compact and powerful tool to manage your day-to-day safe operations.

The PinKey PLUS is an electronic PIN-code protected, non-resident masterkey to securely override Elsafe in-room safes. For added security, each user needs a personal valid PIN code to securely override the safe.

The PinKey PLUS admin software allows you to add, edit and remove PinKey PLUS users and their PIN code in order not to compromise security and manage your staff. PinKey PLUS makes it possible to read out and print the event log from both the safe and the PinKey itself.

The PinKey is the ideal combination for daily management and complements your SafeLink.

■ PinKey PLUS features:

- Secure, easy-to-use and convenient service openings.
- PIN code protected service openings.
- Ideal as a complement to SafeLink in larger properties.
- PinKey PLUS controls up to 25 individual staff users.
- Each user is individually identified.
- Use of PinKey is recorded in safe audit trail.
- Downloads safe audit trail.
- Set up safes.



PLACEMENT SOLUTIONS
Several options - endless choices



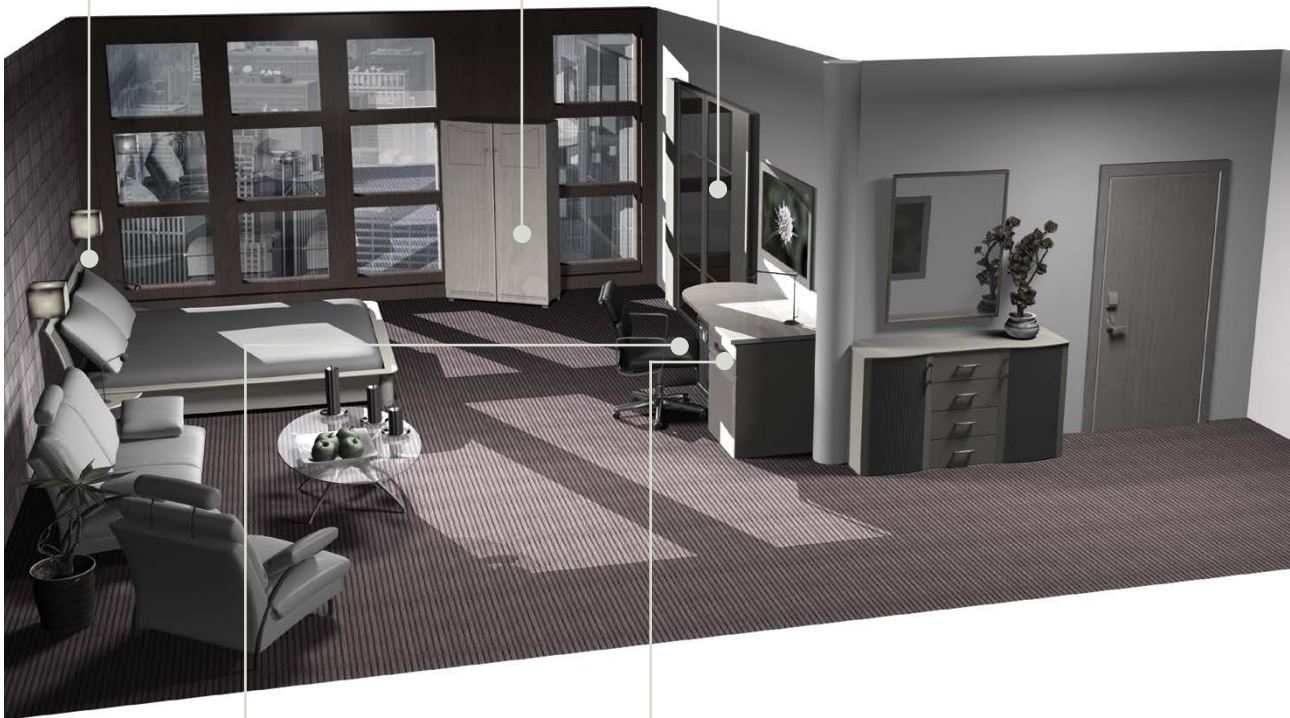
IN-WALL



SHELF



CLOSET



FLOOR



DRAWER



ADDITIONAL INFORMATION

Colors

	Infinity II Color Standard	Infinity II Color Option 1 ⁽¹⁾	Infinity II Color Option 2 ⁽¹⁾	SENTINEL II	ZENITH Drawer/Floor/In Wall	ZENITH 27/43/Wide
Body color:	Black	White	Black	Black	Black/Beige	Black/Beige
Frame:	Glossy black	Glossy white	Gold	Grey	N/A	Black/Beige
Front:	Glossy black & polished chrome ellipse	Glossy white & polished chrome ellipse	Gold & polished chrome ellipse	Silver	Grey/Beige	Black/Beige
Color preview:						

(1) Optional color choice for Infinity II with upcharge.

Dimensions

		Infinity II <small>by Elsafe®</small>			SENTINEL II <small>by Elsafe®</small>		
		Infinity II 25	Infinity II 41	Infinity II 49	Sentinel II 25	Sentinel II 41	Sentinel II 49
External dimensions (h/w/d) incl. keypad	mm inches	206/437/260 8 ¹ / ₈ / 17 ³ / ₁₆ / 10 ³ / ₁₆	206/437/421 8 ¹ / ₈ / 17 ³ / ₁₆ / 16 ⁵ / ₈	206/437/502 8 ¹ / ₈ / 17 ³ / ₁₆ / 19 ¹³ / ₁₆	206/437/260 8 ¹ / ₈ / 17 ³ / ₁₆ / 10 ³ / ₁₆	206/437/421 8 ¹ / ₈ / 17 ³ / ₁₆ / 16 ⁵ / ₈	206/437/502 8 ¹ / ₈ / 17 ³ / ₁₆ / 19 ¹³ / ₁₆
Internal dimensions (h/w/d)	mm inches	196/428/168 7 ¹¹ / ₁₆ / 16 ¹³ / ₁₆ / 6 ⁹ / ₁₆	196/428/330 7 ¹¹ / ₁₆ / 16 ¹³ / ₁₆ / 13	196/428/411 7 ¹¹ / ₁₆ / 16 ¹³ / ₁₆ / 16 ³ / ₁₆	196/428/168 7 ¹¹ / ₁₆ / 16 ¹³ / ₁₆ / 6 ⁹ / ₁₆	196/428/330 7 ¹¹ / ₁₆ / 16 ¹³ / ₁₆ / 13	196/428/411 7 ¹¹ / ₁₆ / 16 ¹³ / ₁₆ / 16 ³ / ₁₆
Door dimensions (h/w)	mm inches	148/320 5 ¹³ / ₁₆ / 12 ⁵ / ₈	148/320 5 ¹³ / ₁₆ / 12 ⁵ / ₈	148/320 5 ¹³ / ₁₆ / 12 ⁵ / ₈	148/320 5 ¹³ / ₁₆ / 12 ⁵ / ₈	148/320 5 ¹³ / ₁₆ / 12 ⁵ / ₈	148/320 5 ¹³ / ₁₆ / 12 ⁵ / ₈
Internal volume	liters cu ft	14,1 0,50	27,7 0,98	34,5 1,22	14,1 0,50	27,7 0,98	34,5 1,22
Weight	kg lb	11,6 23,8	15,1 33,3	17,4 38,4	11,6 23,8	15,1 33,3	17,4 38,4

		ZENITH <small>by Elsafe®</small>						
		ZENITH Standard Safe			ZENITH Drawer Safe		ZENITH Floor Safe	ZENITH In Wall Safe
		ZD 27	ZD 43	ZD WI	ZD 15	ZD 17	ZD FL	ZD IW
External dimensions (h/w/d) incl. keypad	mm inches	191/354/270 7 ³³ / ₆₄ / 13 ¹⁵ / ₁₆ / 10 ⁴¹ / ₆₄	191/354/432 7 ³³ / ₆₄ / 13 ¹⁵ / ₁₆ / 17	191/460/417 7 ³³ / ₆₄ / 18 ¹⁸ / ₁₆ / 16 ²⁷ / ₆₄	131 / 400 / 350 5 ³ / ₁₆ / 15 ³ / ₄ / 13 ³ / ₄	131 / 460 / 350 5 ³ / ₁₆ / 18 ¹ / ₈ / 13 ³ / ₄	536/355/457 21 ¹ / ₈ / 14 / 18	469/418/170 18 ¹ / ₂ / 16 ¹ / ₂ / 6 ⁵ / ₈
Internal dimensions (h/w/d)	mm inches	188/351/200 7 ³ / ₈ / 13 ¹³ / ₁₆ / 7 ⁷ / ₈	188/351/361 7 ³ / ₈ / 13 ¹³ / ₁₆ / 17 ⁷ / ₃₂	188/457/345 7 ³ / ₈ / 18 / 13 ¹⁹ / ₃₂	62-124 / 397 / 347 2 ⁷ / ₁₆ - 4 ⁷ / ₈ / 15 ³ / ₈ / 13 ¹¹ / ₁₆	62-124 / 457 / 347 2 ⁷ / ₁₆ - 4 ⁷ / ₈ / 18 / 13 ¹¹ / ₁₆	500/349/371 19 ¹¹ / ₁₆ / 13 ³ / ₄ / 14 ⁵ / ₈	400 / 350 / 95 15 ³ / ₄ / 13 ³ / ₄ / 3 ³ / ₄
Door dimensions (h/w)	mm inches	140/295 5 ¹ / ₂ / 11 ⁵ / ₈	140/295 5 ¹ / ₂ / 11 ⁵ / ₈	140/400 5 ¹ / ₂ / 15 ³ / ₄	382 / 292 15 ¹ / ₁₆ / 11 ¹ / ₂	442 / 292 17 ³ / ₈ / 11 ¹ / ₂	460/226 18 ¹ / ₈ / 8 ¹⁵ / ₁₆	390/300 15 ¹ / ₃ / 11 ⁴ / ₅
Internal volume	liters cu ft	13 0,46	24 0,84	31,5 1,11	13,5 0,48	16,1 0,57	66 2,33	17,5 0,61
Weight	kg lb	7,8 16,8	10 21,6	12 26,5	8,27 18,23	9,4 20,72	36,2 79,8	20 44



ELECTRONIC IN-ROOM SAFES BY ELSAFE

For more information, please contact:



North America:
E-mail: northamerica@vingcardelsafe.com
Phone: +1 972 907 2273

Asia/Pacific:
E-mail: apac@vingcardelsafe.com
Phone: +65 6305 7670

Europe/Middle East/Africa:
E-mail: emea@vingcardelsafe.com
Phone: +47 69 24 50 00

Latin America:
E-mail: lam@vingcardelsafe.com
Phone: +52 55 36 40 12 00

Stay Smart

VingCard Elsafe | info@vingcardelsafe.com | www.vingcardelsafe.com
Provider of: VingCard Locks & Systems | Elsafe Safes | Orion EMS | PolarBar Minibars

Specifications may change without notice
Colors and finishes in this brochure may differ from actual product and are only used for illustration in this brochure.